

Japan Value Equity Small Cap

February 2026

Strategy

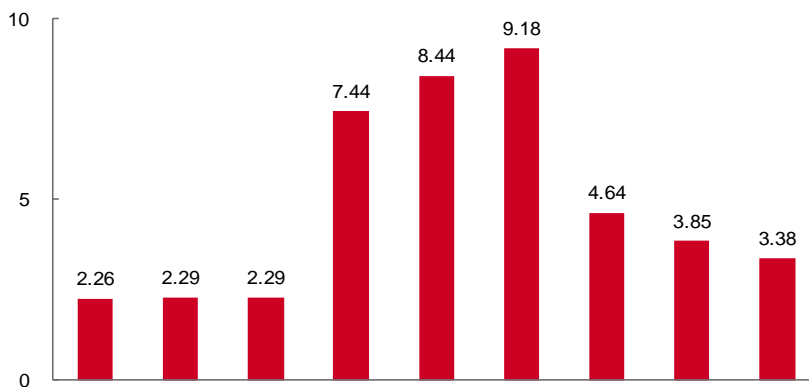
Small Cap Strategy invests in Japanese small cap equities and aims to achieve above-benchmark return in the mid-to long-term. The portfolio manager builds a portfolio by investing in undervalued stocks with careful consideration of risk/return. A bottom-up approach is used. The Japanese equity research team analyzes intrinsic value of individual stocks and compares it with market price in order to identify undervalued stocks. The portfolio is not constrained by sector weights.

Market Review

Expectations for large scale fiscal spending and accommodative monetary policy pushed the market up following the ruling Liberal Democratic Party (LDP)'s landslide victory at a general election. The non-ferrous sector rose on expectations for earnings growth from generative AI related demand. The services and information & communication sectors fell on fears that some of their business may be replaced by generative AI.

The Japanese equity market rose in the first part of the month on the back of political stability and expectations for aggressive economic measures following the LDP's big win at the lower house election. Share prices then saw upside resistance in the middle of the month as the market was showing signs of overheating with the lack of news flow after the earnings season for Japanese companies. The below-consensus GDP growth increased concerns over the Japanese economy and weighed on the market. The market rebounded on eased fears over global economy in the latter part of the month as the US Supreme Court struck down Trump's reciprocal tariffs. Share prices rose through the end of the month on reduced expectations for early rate hikes as the candidates for the BOJ board members proposed by the government were considered to be cautious for rate hikes.

Composite Performance (%) Excess Return*



	Feb	QTD	YTD	1Y	3Y	5Y	7Y	10Y	SI
Composite	13.61	18.37	18.37	60.75	35.32	27.10	18.78	17.11	11.92
Benchmark	11.35	16.08	16.08	53.31	26.88	17.93	14.13	13.25	8.54

Composite Summary

Composite Name	SJAM Small Cap Mother Fund		
Benchmark	Russell/Nomura Small Cap**		
Inception Date	October 2007		
Number of Holdings	83		
Bloomberg Code	SNAMSMC		
Assets Under Management	Domestic	JPY 34.2B (USD 219M)	
	Overseas	JPY 16.9B (USD 108M)	
	Strategy total	JPY 51.1B (USD 327M)	

Top Ten Holdings	%
JTEKT CORP	3.94
RENGO CO LTD	3.69
TOYOTA BOSHOKU CORP	3.37
SERIA CO LTD	3.22
MABUCHI MOTOR CO LTD	3.22
TAIYO YUDEN CO LTD	3.19
NIHON M&A CENTER HOLDINGS IN	2.93
JGC HOLDINGS CORP	2.55
SUMITOMO HEAVY INDUSTRIES	2.46
NIPPON KAYAKU CO LTD	2.40
Total	30.98

Characteristics

	Portfolio	Benchmark
P/E	14.78x	15.32x
P/B	1.05x	1.39x
ROE	7.12%	9.07%
Dividend Yield	2.76%	2.42%

Market Cap

	Portfolio	TOPIX
Large	0.0%	67.5%
Mid	51.4%	25.3%
Small	44.8%	7.2%
Others	3.2%	-

* Excess return figures are annualized for three years and longer.

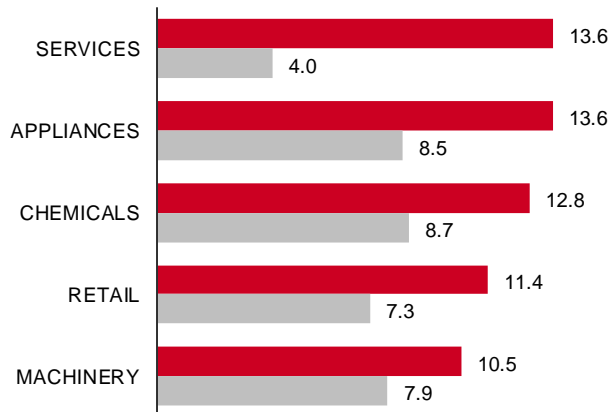
** Russell/Nomura Small Cap Index includes the dividends paid by the index constituents.

The data shown is of a representative account. Past performance is not a guarantee of future returns.

This document has been prepared solely for informational purposes and does not constitute an offer to sell securities in any jurisdiction. Actual performance achieved by a client portfolio may be affected by a variety of factors, including the initial balance of the account, the timing and amount of any additions to or withdrawals from the portfolio, changes made to the account to reflect the specific investment needs or preferences of the client, duration and timing of participation as a client, and a client portfolio's risk tolerance, investment objectives and investment time horizon. The returns presented above are gross and do not reflect the deduction of investment advisory fees which will reduce returns.

Japan Value Equity Small Cap

Top Five Sector Weights (%)



■ Portfolio ■ Benchmark



Shigeyoshi Fujiwara, CMA
 Senior Portfolio Manager
 20 years investment experience
 20 years at Sompo AM

Attribution Analysis

Both sector allocation and stock selection contributed to performance. In sector allocation, underweighting (UW) of Info & Comm and overweighting (OW) of Appliances and Machinery contributed to performance, while OW of Services and UW of Nonferrous and Construction detracted. In stock selection, OW of Taiyo Yuden, Sumitomo Heavy Industries, and Toyota Boshoku contributed to performance, while OW of en Inc., Sawai Group Holdings, and Nihon M&A Center Holdings detracted. Last month we increased holdings of BELLSYSTEM24 Holdings, Kakaku.com, and en Inc. and decreased holdings of Sumitomo Heavy Industries, Kyushu Financial Group, and Toyota Boshoku.

Outlook

We expect the market will fluctuate around the recent bottom but show signs of a potential recovery. While we should watch the situation surrounding Iran, we expect the market will gradually regain a sense of calm as long as it doesn't lead to further escalation to the war and prolonged high energy prices. It looks highly likely that corporate earnings will continue to rise in the coming fiscal year given smaller negative impacts from Trump tariffs. We believe historically high valuations (forward P/E, etc) will be warranted, driven by strong corporate earnings, expectations for the Takaichi administration following the LDP's landslide victory at the lower house election and further improvement to corporate governance if the situation in the Middle East eases quickly. The market will be supported as there is strong equity demand from a high level of large-scale share buybacks and the BoJ has relatively accommodative monetary policy compared to the US and Europe.

Contact Information

Daniel Robbins
 +81 3 5290 3414

Group email: global@sompo-am.co.jp

Important Notice

This material is being made available to you by SOMPO ASSET MANAGEMENT CO., LTD, "Sompo AM". Sompo AM is not licensed or registered in any jurisdiction except in Japan. You are not permitted to copy this material or pass it to anyone else. This material does not constitute an offer to sell securities in any jurisdiction. This material is not, and must not be treated as, investment advice or investment recommendations. Before making any investment decision, you should seek independent investment, legal, tax, accounting or other professional advice as appropriate, none of which is offered to you by Sompo AM. No investment service will be provided in or into any jurisdiction except to the extent permitted by local law. Sompo AM makes no representation or warranty, express or implied, except as required by law or in the case of fraud, regarding the accuracy, completeness or adequacy of the information in this material. Past performance is not a guarantee of future results.

For the attention of investors in the US

This report is for the use of non-U.S. persons.

For the attention of investors in the United Kingdom:

To the extent that this material is being issued by any persons who are not authorised under the Financial Services and Markets Act 2000 (the "Act"), it is being issued in the United Kingdom only to, and/or is directed only at, persons who are of a kind to whom it may lawfully be issued or directed under the Financial Services and Markets Act 2000 (Financial Promotion) Order 2005, including persons who are authorised under the Act ("authorised persons"), certain persons having professional experience in matters relating to investments, high net worth companies and high net worth unincorporated associations or partnerships. This material is only available to such persons in the United Kingdom and this material must not be copied or distributed to any other person without seeking prior consent from Sompo AM.

For the attention of investors in Abu Dhabi:

This material and the information contained herein, does not constitute, and is not intended to constitute, a public offer of securities or other form of investments in the UAE and accordingly should not be construed as such. The portfolio management services detailed herein are only being offered to a limited number of sophisticated investors in the UAE: (a) who are willing and able to conduct an independent investigation of the risks involved in the related investments and (b) upon their specific request. The investments and services detailed herein have not been approved by or licensed or registered with the UAE Central Bank, the Securities and Commodities Authority or any other relevant licensing authorities or governmental agencies in the UAE. This material is for the use of the named addressee only and should not be given or shown to any other person (other than employees, agents or consultants in connection with the addressee's consideration thereof). No transaction will be concluded in the UAE and any enquiries regarding the investments and services detailed herein should be made to Sompo AM.

Sompo AM is a registered Financial Instruments Firm with the Director General of Kanto Local Finance Bureau ("KLFB") of the Japan Ministry of Finance, KLFB (KINSYO) No. 351, and is a member of the Japan Investment Advisers Association, and The Investment Trusts Association, Japan.